

01

# SABANG SAJANIKANTA MAHAVIDYALAYA



P.O. - LUTUNIA \* DIST. - PASCHIM MEDINIPUR \* W.B  
PIN-721166 \* PHONE NO. - (03222) 248221

Ref. No. Ss.KM/Ten/Pa-Chem/Lab-Furni/17-03

Date 11/08/2017

## Tender Notice

Sealed Quotations are invited from registered and reputed suppliers/wooden furniture manufacturer to make Chemistry Laboratory Table (Phase-I) as per specification and drawing in Annexure-1 for the Department of Chemistry, Sabang Sajanikanta Mahavidyalaya, on or before 21-08-2017 at 3.00 PM.

Rates along with Tax (VAT & GST etc) & delivery charges should be quoted in accordance with the specifications.


Seal Tenders will be opened on 22.08.2017 (Tuesday) at 1.30 PM in the Principal's Chamber of Mahavidyalaya in presence of participants or their representatives.

College Authority reserves the right to reject any or all tenders without assigning any reason.



Copy to

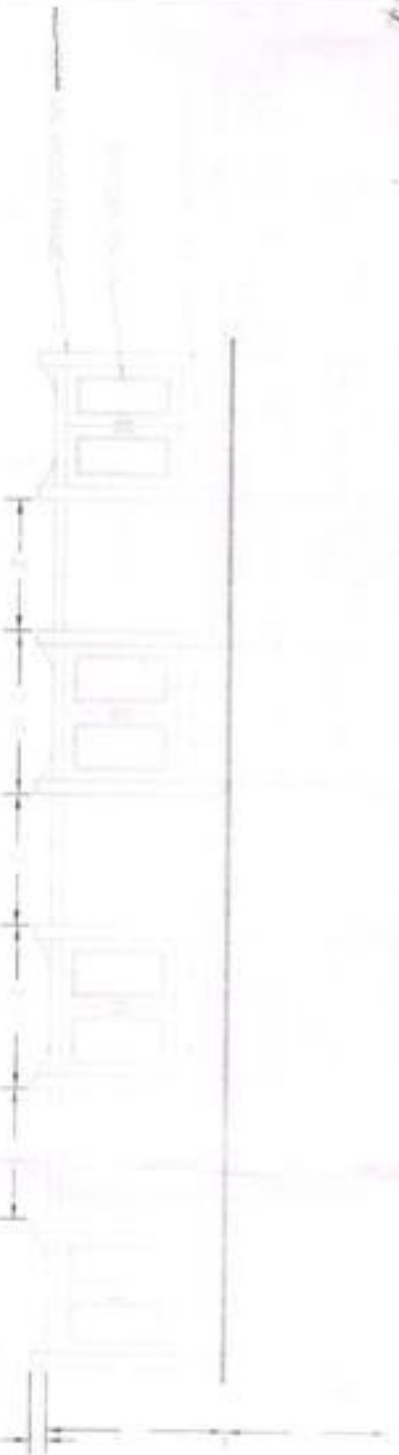
1. College Notice Board
2. BDO, Sabang
3. Pradhan, 1 No. Debhog Gram Panchyat.

  
Teacher-in-Charge  
Sabang Sajanikanta Mahavidyalaya

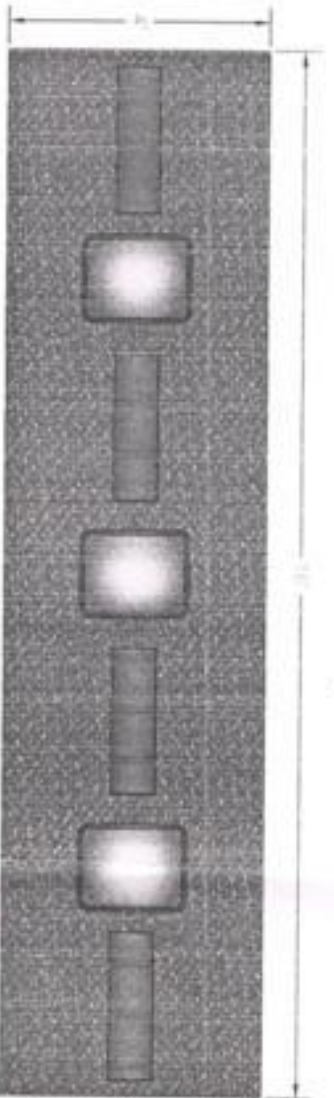
Teacher-in-Charge  
Sabang Sajanikanta Mahavidyalaya  
Lutunia, Paschim Medinipur, 721166

W/S

Annexure -1



BOTH SIDES ELEVATION OF LABORATORY TABLE



TOP VIEW PLAN OF LABORATORY TABLE

**CHEMISTRY LABORATORY TABLE : (SIZE 16ft x 4ft 11)**

PROVIDING AND FIXING IN POSITION LABORATORY TABLE MADE OF TOTAL FRAME WORK BY S&S WOOD (16 POS LEG SECTION 2 1/2" X 2 1/2" SIDE SECTION 2 1/2" X 1 1/2") REST OF WOOD LIKE PALLA DRAWER SIDE COVERING TOP ETC ARE MADE OF LOCAL GOOD QUALITY WOOD THREE LABORATORY SINK BLACK POLISH GRANITE TOP MADE AS PER DESIGN OUTSIDE POLISH/PAINTE



Kite